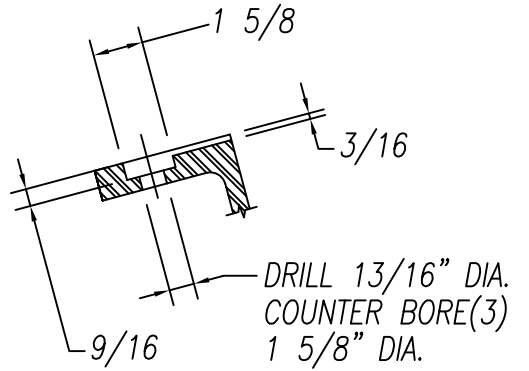


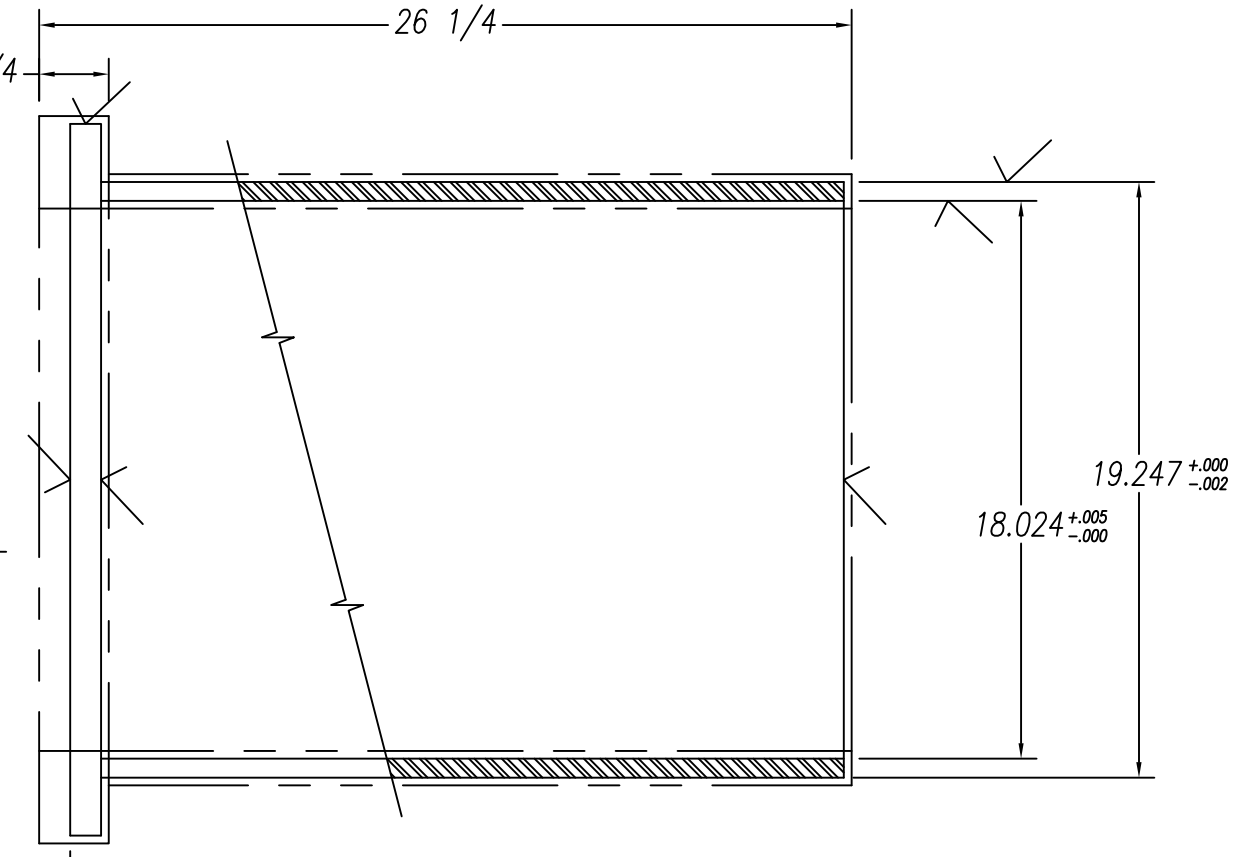
SECTION "A-A"
 SCALE 2X
 SYMMETRICAL
 BOTH SIDES

(2) DRILL 17/32
 (.531) THREAD 5/8-11NC 2
 ON A 19 1/4" D.B.C

CHIP 3/16" DEEP
 OIL PASSAGE TO
 WIDTH OF C'BORE
 (3) REQUIRED TYP.

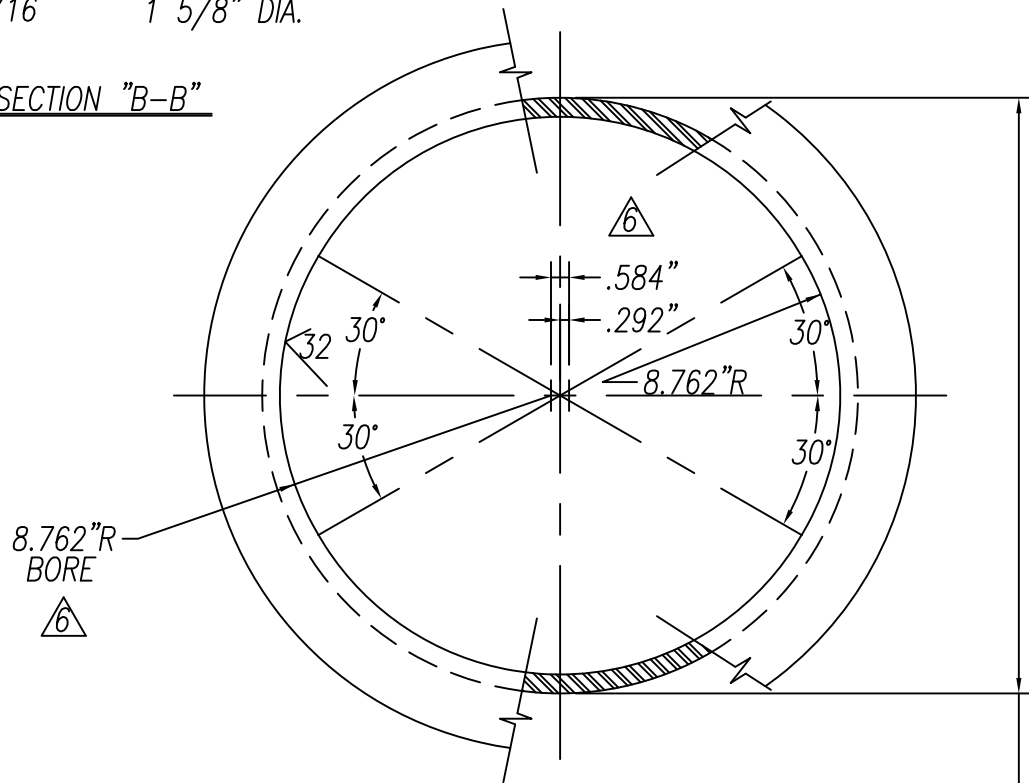


SECTION "B-B"



CASTING DETAIL ∇ 6

ALLOW FOR CHUCKING



DETAIL OF FINAL BORE ∇ 6

19.247^{+0.000}/_{-0.002}D.
 SPLIT ON THIS AXIS
 WHEN ALL MACHINING
 (EXCEPT SECT "A-A")
 IS DONE

REV. NO	DATE	BY	APPV.	DESCRIPTION

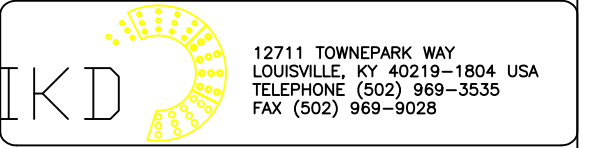
TOLERANCES UNLESS OTHERWISE NOTED

WHOLE NUMBER DIM.	1/16"	ANGULAR DIM.	1/2-
FRACTIONAL DIM.	1/16"	DECIMAL DIM. (.XX)	.010
		DECIMAL DIM. (.XXX)	.005

NOTICE: THE INFORMATION CONTAINED HEREIN IS PROPRIETARY TO LOUISVILLE DRYING MACHINERY AND SHALL NOT BE REPRODUCED OR DISCLOSED IN WHOLE OR IN PART, NOR USED FOR ANY DESIGN OR MANUFACTURING PURPOSE UNLESS AUTHORIZED IN WRITING BY LOUISVILLE DRYING MACHINERY



CUSTOMER:
 DESCRIPTION: BUSHING



DWG. BY: NEG
 CHK. BY: RPS
 APPROVED BY: -
 DATE: 11/05/2009
 SCALE: DWG.# KILN BRG BUSHING
 SHT. # OF: