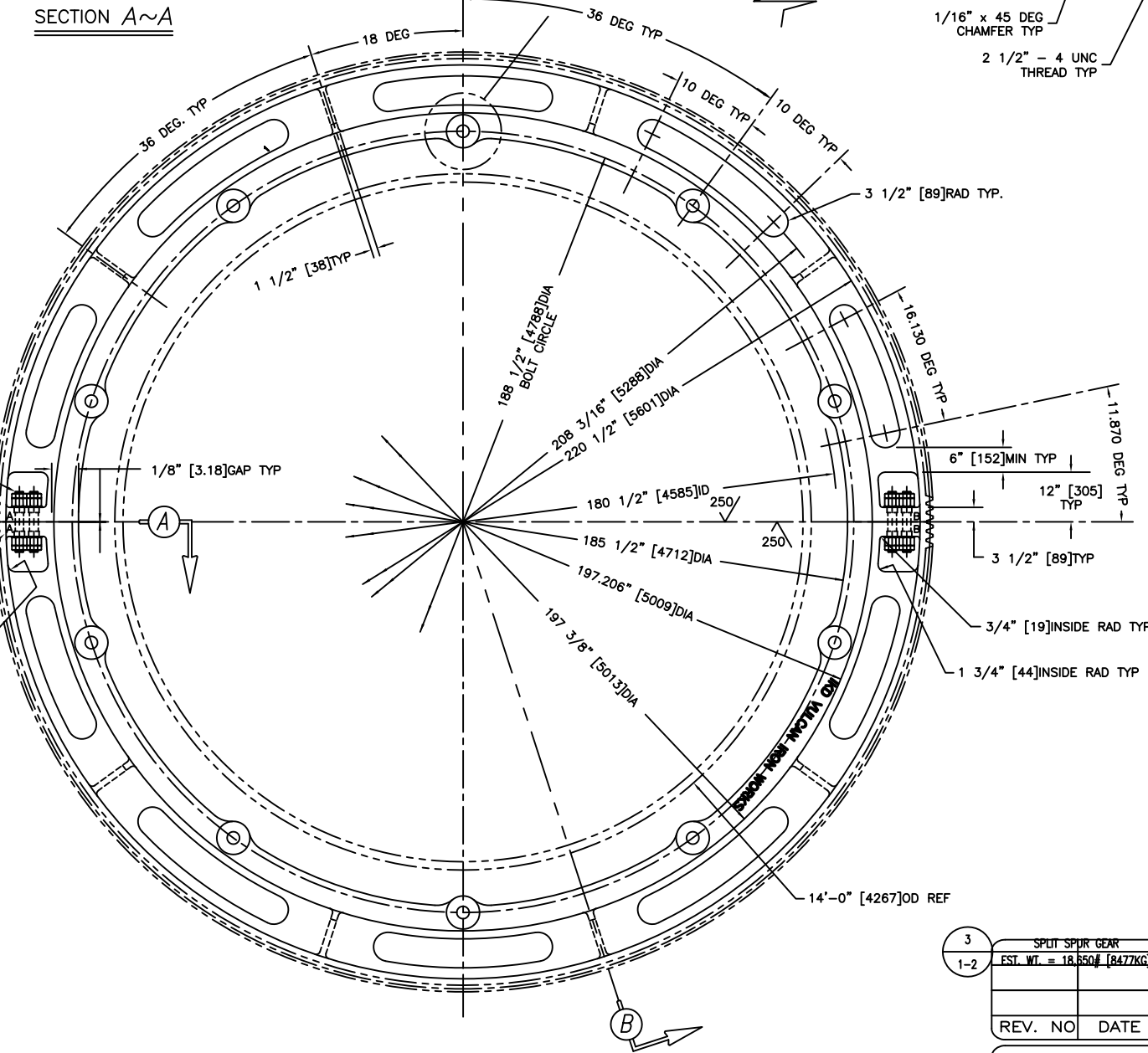
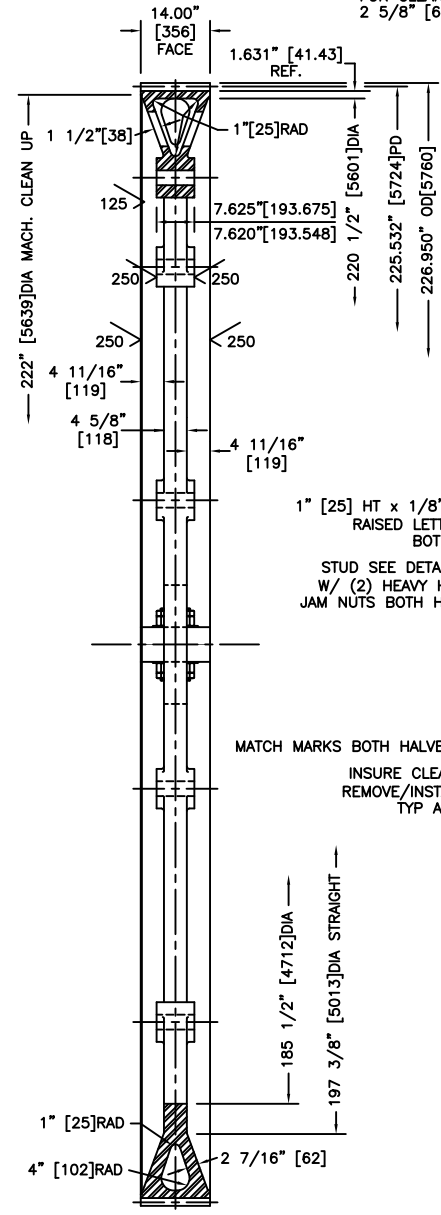


SPLIT SPUR GEAR
 318 TOOTH, NORMAL DP = 0.708" [18] MODULE
 14" [356] FACE, NORMAL PD = 225.532" [5724]
 VIW PATTERN NO. 25650

GEAR DATA

- 1.) 318 TEETH, NORMAL DP = 0.708" [18] MODULE, FULL DEPTH TEETH, 14" [356] FACE
- 2.) SPLIT RING GEAR IN (2) HALFS
- 3.) ADDENDUM = 0.708" [18]
- 4.) DEDENDUM = 0.885" [22.5]
- 5.) NORMAL PITCH DIA = 225.532" [5724]
- 6.) NORMAL OUTSIDE DIA = 226.950" [5760]
- 7.) NORMAL ROOT DIA = 223.583" [5679] MAX
- 8.) PRESSURE ANGLE = 20°
- 9.) BRINELL HARDNESS = 240/280

- 9 COAT MACHINED SURFACES W/ REMOVABLE RUST PREVENTER, PREPARE & PAINT REMAINDER OF GEAR W/ GREY ENAMEL.
- 8 DIMENSIONS SHOWN IN BRACKETS [mm] IN MILLIMETERS.
- 7 MATERIAL: 4130 CROMOLY CAST STEEL UNLESS NOTED
- 6 GEAR TO MESH WITH PINION DWG. 25889
- 5 ALL RADS TO 1/2" [13] UNLESS OTHERWISE SPECIFIED
- 4 GEAR EST. WT. INCLUDING STUDS AND BOLTS = 18,650#
- 3 GEAR TO CONFORM TO AGMA QUALITY 8
- 2
- 1 THIS PRINT IS LOANED SUBJECT TO RETURN UPON DEMAND & UPON THE EXPRESS CONDITION THAT IT IS NOT TO BE USED DIRECTLY OR INDIRECTLY IN ANY WAY DETRIMENTAL TO OUR INTERESTS.



REV. NO	DATE	BY	APPV.	DESCRIPTION
3				SPLIT SPUR GEAR
1-2				EST. WT. = 18,650# [847KG]

TOLERANCES UNLESS OTHERWISE NOTED			
WHOLE NUMBER DIM.	1/16"	ANGULAR DIM.	1/2°
FRACTIONAL DIM.	1/16"	DECIMAL DIM. (.XX)	.010
		DECIMAL DIM. (.XXX)	.005

NOTICE: THE INFORMATION CONTAINED HEREIN IS PROPRIETARY TO LOUISVILLE DRYING MACHINERY AND SHALL NOT BE REPRODUCED OR DISCLOSED IN WHOLE OR IN PART, NOR USED FOR ANY DESIGN OR MANUFACTURING PURPOSE UNLESS AUTHORIZED IN WRITING BY LOUISVILLE DRYING MACHINERY



CUSTOMER:
 DESCRIPTION: KILN GEAR
 318T, 14 F 18 MOD



DWG. BY: RPS DATE: 12-20-1997
 CHK. BY: -
 APPROVED BY: -
 SCALE: DWG.# KILN GIRTH GEAR
 SHT. # OF: