

SECT "A"-"A"  
TYP BOTH ENDS

SECT "C"-"C"

MAN HOLE

VIEW "D"

NOTES: 1) ALL WELDING PER AWS D1.1  
2) MATERIAL ASTM A36

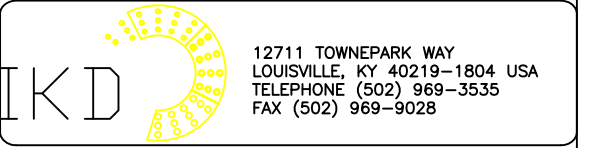
REV. NO	DATE	BY	APPV.	DESCRIPTION

<b>TOLERANCES UNLESS OTHERWISE NOTED</b>			
WHOLE NUMBER DIM.	1/16"	ANGULAR DIM.	1/2-
FRACTIONAL DIM.	1/16"	DECIMAL DIM. (.XX)	.010
		DECIMAL DIM. (.XXX)	.005

**NOTICE:** THE INFORMATION CONTAINED HEREIN IS PROPRIETARY TO LOUISVILLE DRYING MACHINERY AND SHALL NOT BE REPRODUCED OR DISCLOSED IN WHOLE OR IN PART, NOR USED FOR ANY DESIGN OR MANUFACTURING PURPOSE UNLESS AUTHORIZED IN WRITING BY LOUISVILLE DRYING MACHINERY



CUSTOMER: ALSTOM  
DESCRIPTION: MILL SHELL 5X10



DWG. BY: NEG      DATE: 11-17-1997  
CHK. BY: -  
APPROVED BY: -  
SCALE:      DWG.# BV-1883  
SHT. #      OF:

NEXT DWG'S: DV-2688-1