

FORGED ALLOY STEEL AISI 4140 QUENCHED & TEMPERED, AGMA QUALITY 8 IN ACCORDANCE WITH AGMA 2000-A88			
TOOTH FORM -SINGLE HELICAL, STD. 20° INVOLUTE FULL DEPTH			
NORMAL DP	1.5	WHOLE DEPTH	1.432"
ADDENDUM	0.664"	NO. OF TEETH	24
PITCH DIA.	25.8"	TOOTH THICKNESS	1.043"
OUTSIDE DIA.	16.12"	FORGING HARDNESS	262/302 BHN
PRESSURE ANGLE	20°	MATING GEAR	284 TEETH
HELIX ANGLE,HAND	7° RIGHT HAND	UNIT WEIGHT EST.	2150#

REV. NO	DATE	BY	APPV.	DESCRIPTION

TOLERANCES UNLESS OTHERWISE NOTED

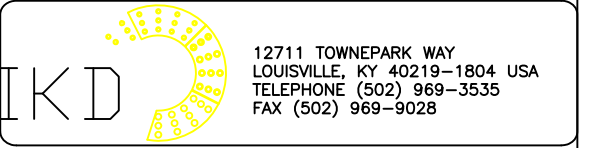
WHOLE NUMBER DIM.	1/16"	ANGULAR DIM.	1/2-
FRACTIONAL DIM.	1/16"	DECIMAL DIM. (.XX)	.010
		DECIMAL DIM. (.XXX)	.005

NOTICE: THE INFORMATION CONTAINED HEREIN IS PROPRIETARY TO LOUISVILLE DRYING MACHINERY AND SHALL NOT BE REPRODUCED OR DISCLOSED IN WHOLE OR IN PART, NOR USED FOR ANY DESIGN OR MANUFACTURING PURPOSE UNLESS AUTHORIZED IN WRITING BY LOUISVILLE DRYING MACHINERY



CUSTOMER: CALIDRA

DESCRIPTION: BALL MILL PINION
DRY GRATE DISCHARGE



DWG. BY: NEG	DATE: 12-20-1998
CHK. BY: -	
APPROVED BY: -	
SCALE:	DWG.# BV-26747
	SHT. # OF:

NEXT DWG'S: DV-2688-1